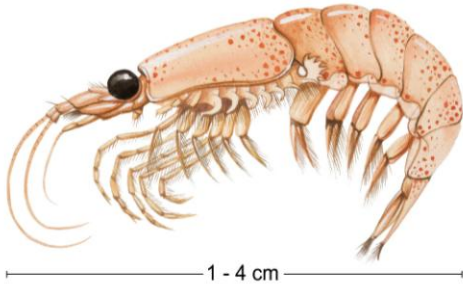


## MSC Fishery Fact Sheet: Aker BioMarine Antarctic krill



<b>Latin name</b>	<i>Euphausia superba</i>
<b>Deutsch</b>	Antarktischer Krill
<b>English</b>	Antarctic krill
<b>Español</b>	Krill antártico
<b>Français</b>	Krill antarctique
<b>Nederlands</b>	Antarctische Krillgarnaal

### Basic information

<b>Location</b>	The Atlantic sector of the Southern (Antarctic) Ocean
<b>Fishing gear</b>	Pelagic (mid-water) trawl
<b>Season</b>	January to September
<b>Quota / TAC</b>	39,578MT (2009 figures)
<b>Products</b>	For human consumption: SUPERBA™ krill oil, krill capsules (pictured) For aquaculture and animal feed: QRILL™ Krill meal (pictured on next page) and krill oil
<b>Date certified</b>	15 June 2011

### Background information

Krill are zooplanktons that move in dense shoals, which can stretch for kilometres. They are found in Antarctic waters between the continent and the polar front (ice) generally within depths of a 100m or less. Krill are filter feeders and consume phytoplankton (generally single-celled plant-based organisms) and other zooplankton (small shrimps and larvae). They also graze on algae under the ice.

The krill fishery started in the 1960s but became a permanent fishery in 1972. New technology developed by Aker BioMarine ensures that each krill caught gives a greater yield as the krill are not squashed during fishing operations.

**MSC webpage** [www.msc.org/track-a-fishery/certified/southern-ocean/aker-biomarine-antarctic-krill](http://www.msc.org/track-a-fishery/certified/southern-ocean/aker-biomarine-antarctic-krill)



## Sustainability notes

### Stock levels

The krill stock under certification is considered to be healthy. Catches are very low relative to the overall stock size, and it is highly likely that the stock is well above its reference points, and above the level where recruitment might be impaired. Catches are also currently only approximately one-fifth of a defined trigger level, which if breached requires the implementation of area-based quotas, in order to avoid catches being concentrated within the foraging areas of vulnerable predators.

### Environmental Impact

The trawl net opening is covered by a fine excluder mesh, preventing the catch of animals larger than krill. No bird or marine mammal mortalities have been observed. Because bycatch is low and consists mainly of juvenile fish, there is no onboard sorting or discarding; the entire catch is utilized. The gear type used does not come into contact with the seabed and, as a result, impacts on the benthic habitat are negligible.

### Management plan

The Commission for the Conservation of Antarctic Marine Living Resources (CCAMLR) is the management organisation responsible for fisheries within Antarctic waters. Its aim is the conservation of marine life, and all CCAMLR fisheries are managed within a precautionary approach. Given the importance of krill within the Southern Ocean food web, it being a key prey species for penguins, seals, whales and fish, CCAMLR uses an ecosystem approach to management, and has begun the process of managing krill fisheries at the more localised scale.

### Changes in progress

Although bycatch of larval fish is less than 5% of total catch weight, and the impacts on stocks are believed to be low, the fishery client is committed to using independent scientific observers to monitor larval bycatch of all species using CCAMLR sampling protocols. Key factors that increase larval bycatch will be identified, in order to determine appropriate management measures to reduce bycatch.

## Useful websites

**Suppliers:** [www.msc.org/where-to-buy/find-a-supplier](http://www.msc.org/where-to-buy/find-a-supplier)

**FAO factsheet:** [www.fao.org/fishery/species/3393/en](http://www.fao.org/fishery/species/3393/en)

## Certificate holder

**Company Address**  
Aker Biomarine  
Fjordalleen 16  
P.O. Box 1423 Vika  
0115 Oslo  
Norway

**Contact**  
Sigve Nordrum  
**Phone** +47 24130188 or +47 91630188  
**Email** [sigve.nordrum@akerbiomarine.com](mailto:sigve.nordrum@akerbiomarine.com)



Qrill™ meal © Aker Biomarine

**Last updated:** July 2011

