



MoodyMarine
certification for the marine environment

MSC Re-Assessment

At-Sea Processors Association Bering Sea and Aleutian Islands Pollock Fishery Gulf of Alaska Pollock Fishery

Assessment Schedule

MSC assessments proceed through a prescribed series of stages. Assuming no delays, an assessment typically takes 12 months. The re-assessment of these fisheries is due to be completed by 13 February 2010

The main sequence of activities is set out below, with the time required for each stage. A delay at any stage may extend the overall timeframe accordingly.

	Stage	Time required
1	Notification of assessment commencement	5 days
2	Assembling of expert team	Variable
3	Stakeholder consultation on expert team	10 days
4	Confirmation of use of standard Performance Indicators and Scoring Guideposts	30 days
5	Announcement of Site Visit	30 days
6	Assessment Visit	1 week
7	Production of report and scoring of fishery	2 months
8	Consultation on peer reviewers	10 days
9	Client review of Draft Report (version 1)	30 days
10	Peer review of Draft Report (version 2)	30 days
11	Stakeholder review of Draft Report (version 3)	30 days
12	Moody Marine internal certification determination	5 days
13	Stakeholder consultation on Final Report (version 4) and Determination	21 days
14	Issuance of Public Certification Report (version 5)	5 days

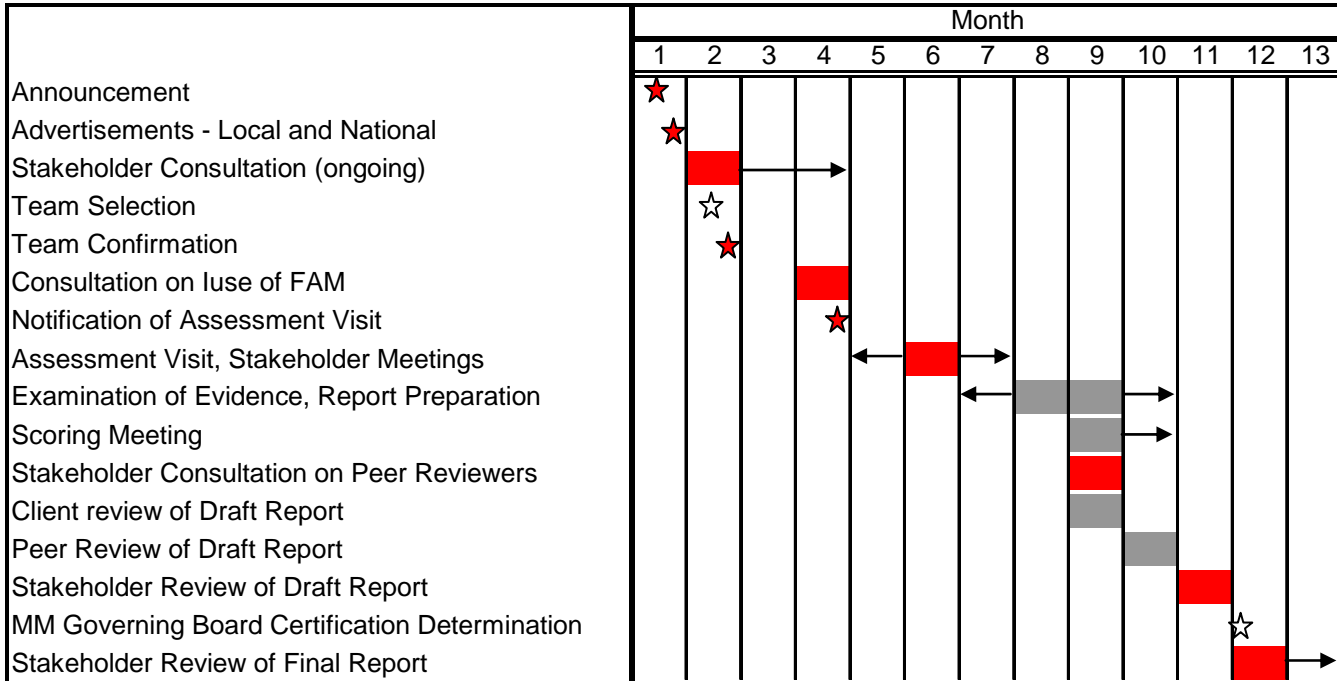
A typical sequence of a main assessment is illustrated below.

Moody Marine Ltd
Merlin House
Stanier Way
The Wyvern Business Park
Derby. DE21 6BF
Telephone: +44 (0) 1633 401092
Fax: +44 (0) 1332 675 1020
Email: p.knapman@moodyint.com
Web Site: www.moodyint.com



MoodyMarine

certification for the marine environment



Moody Marine Ltd
 Merlin House
 Stanier Way
 The Wyvern Business Park
 Derby. DE21 6BF
 Telephone: +44 (0) 1633 401092
 Fax: +44 (0) 1332 675 1020
 Email: p.knapman@moodyint.com
 Web Site: www.moodyint.com