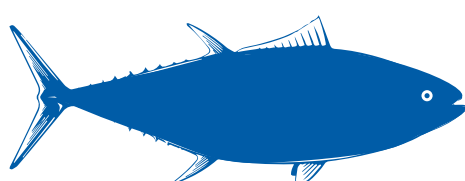


Welcome to the MSC's Sustainable Tuna News – bringing you the latest commercial developments on tuna and the MSC program, on a quarterly basis.

KEY DATA FOR GLOBAL TUNA IN THE MSC PROGRAM

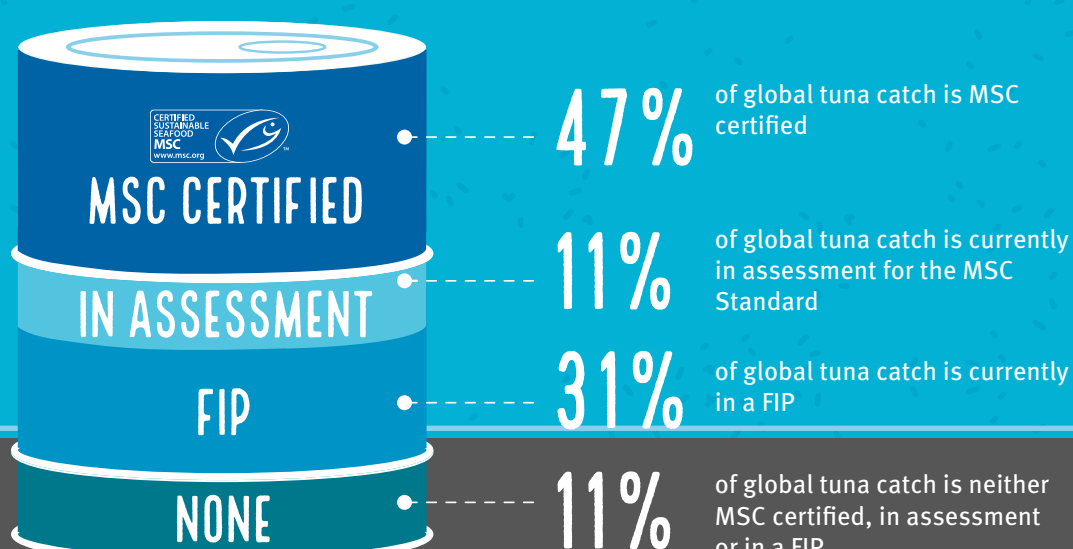
Total major commercial tuna catch



5,056,691 TONNES (FAO 2020)

Around **58%** of the global tuna catch is engaged in the MSC program (certified or in full assessment)

PERCENTAGE OF GLOBAL TUNA CATCH

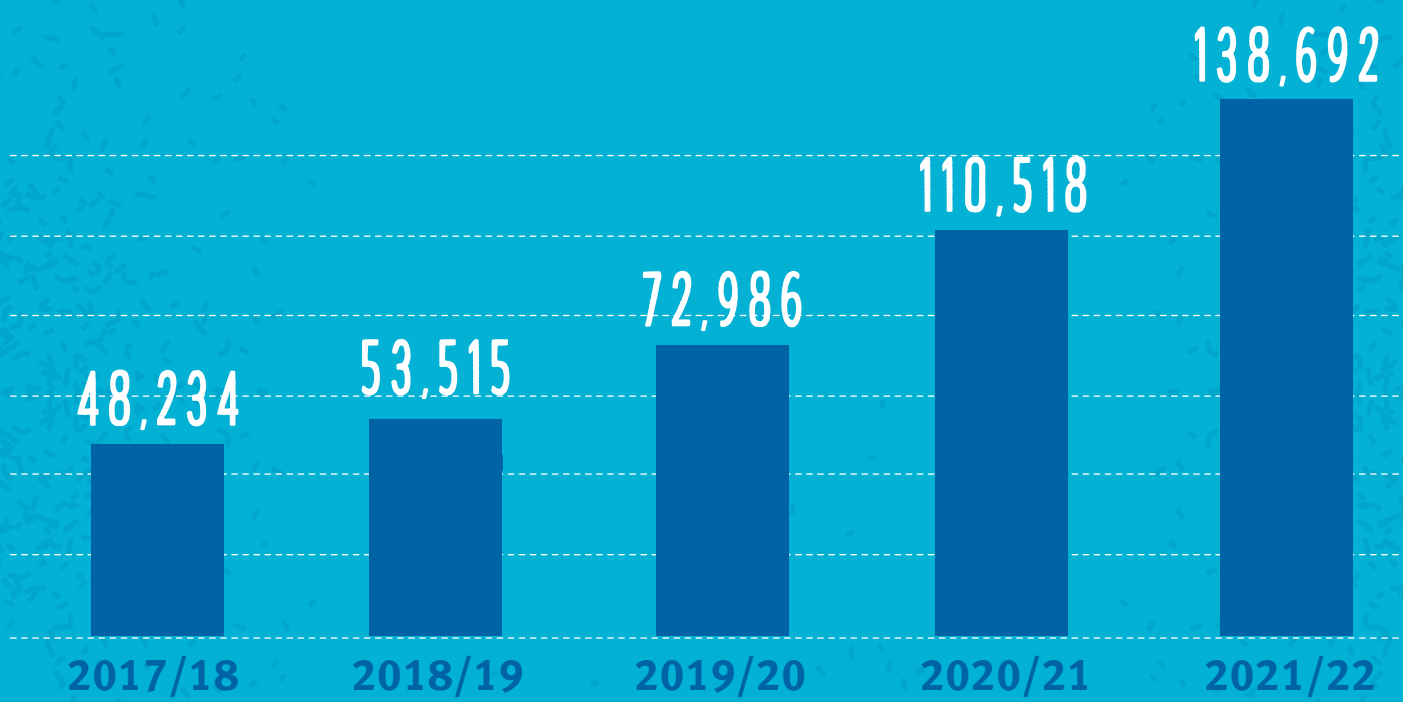


VOLUME OF TUNA IN THE MSC PROGRAM OR IN A FIP

METRIC TONNES



MSC LABELLED PRODUCT VOLUMES IN TONNES BY YEAR



** 21/22 figures include April 2021 - March 2022

NUMBER OF BRANDS SELLING MSC LABELLED TUNA BY SPECIES

In 2022...

