

KEY DATA FOR GLOBAL TUNA IN THE MSC PROGRAM

MSC TUNA SUPPLY, FEBRUARY 2024

MSC TUNA FIGURES AS OF FEBRUARY 24

2,346,962 T

Tonnes MSC engaged catch*

47% of global wild tuna catch from MSC engaged fisheries**

1,679,400 T

Tonnes of certified catch

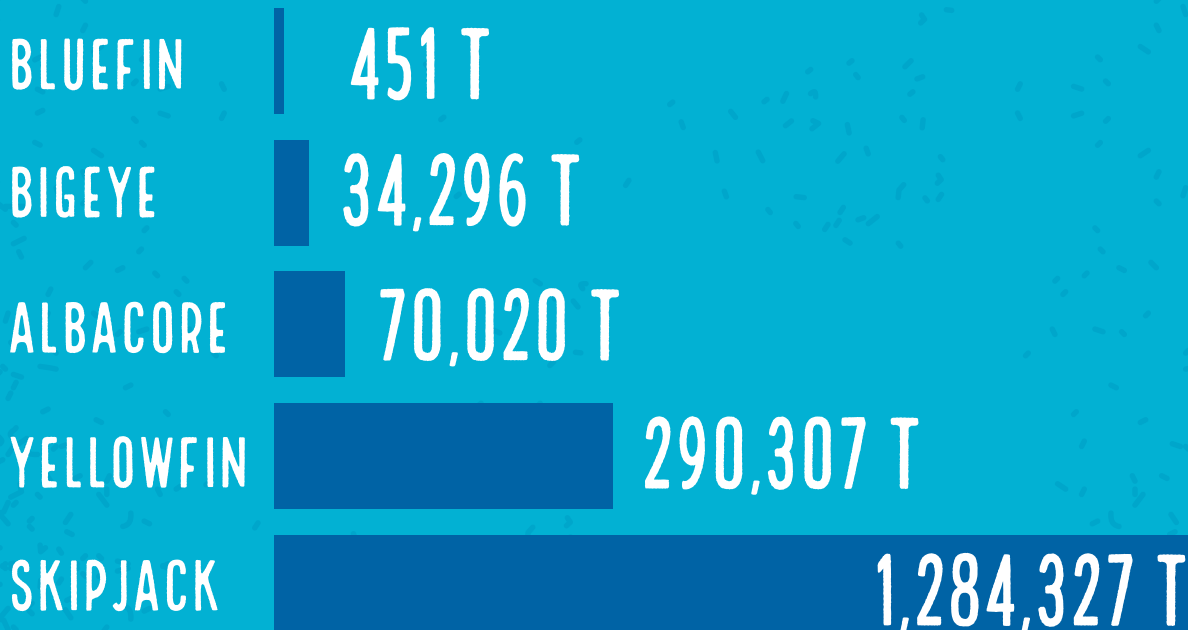
34% of global wild tuna catch from MSC certified fisheries**

*Engaged means certified, in assessment, in transition-to-MSC, or suspended.

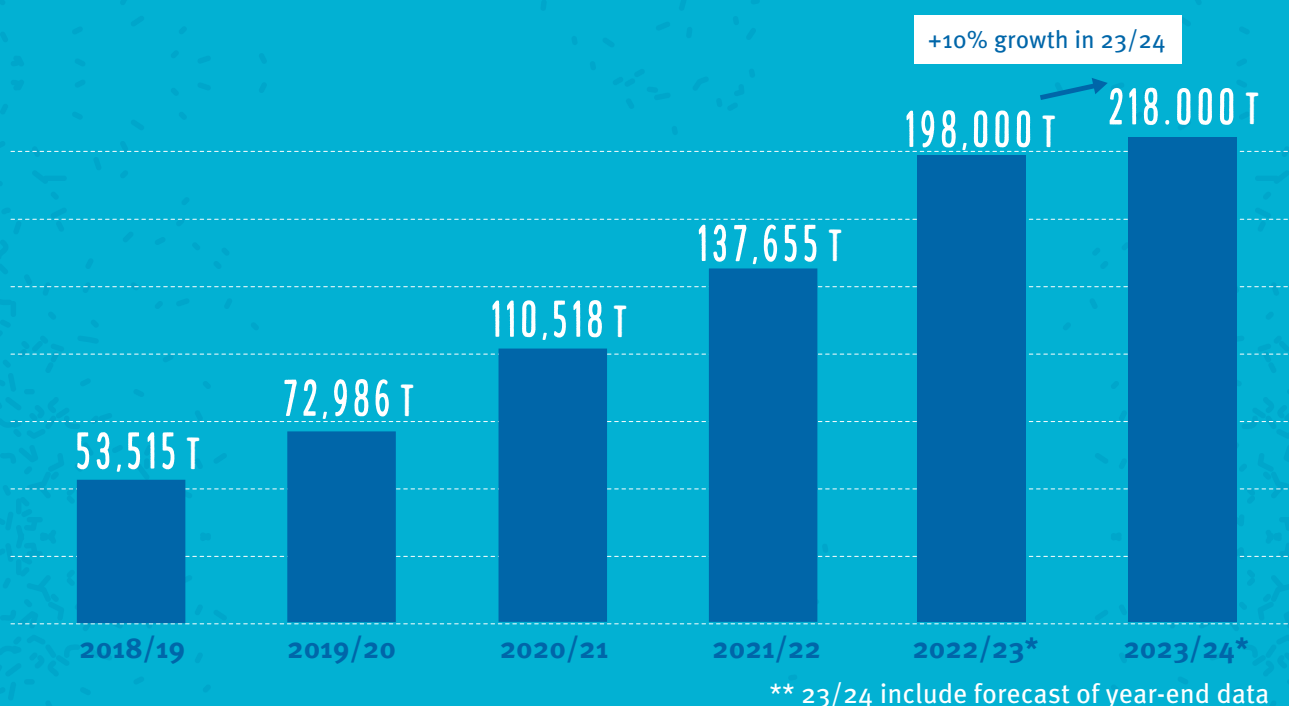
**As per UN FAO data, 2021.

Tuna volumes in the Western Central Pacific have been adjusted in overlapping fisheries.

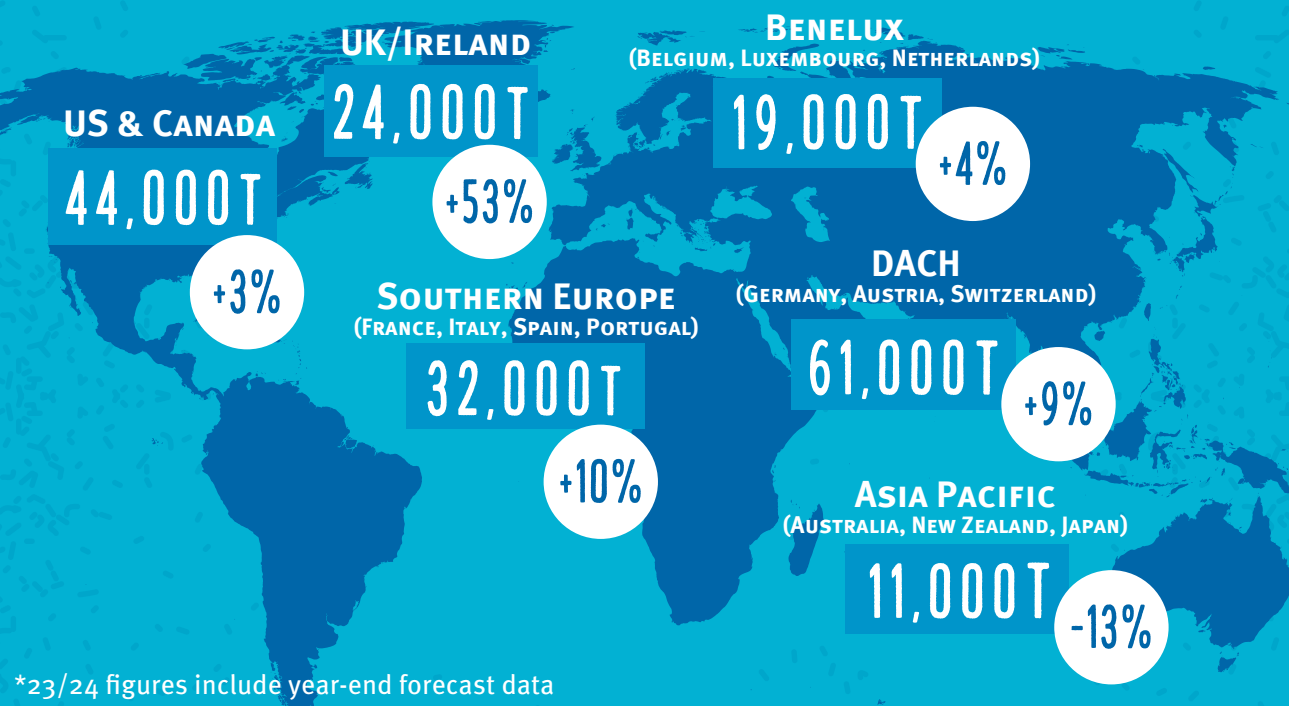
MSC CERTIFIED TUNA BY SPECIES



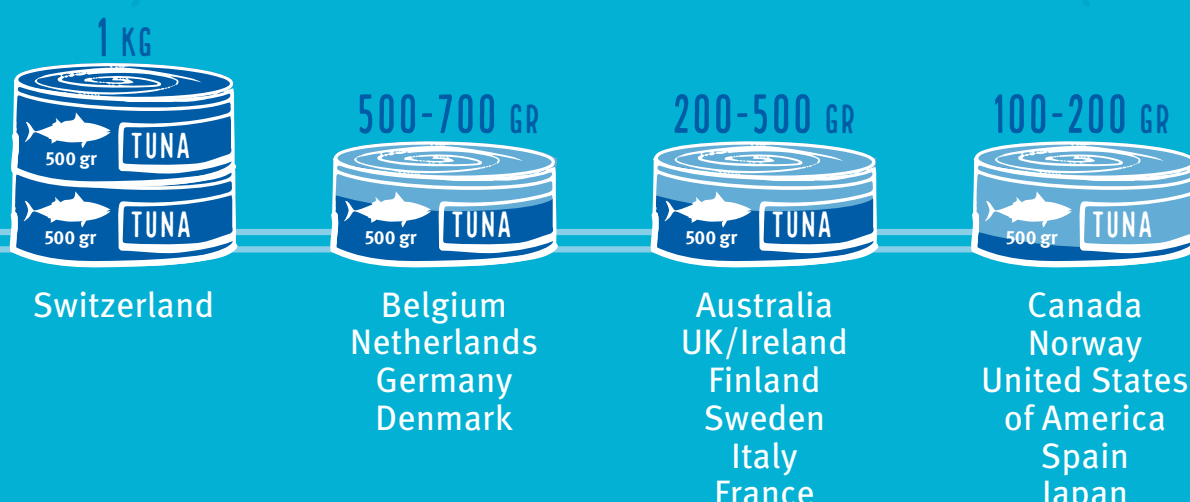
MSC LABELLED PRODUCT VOLUMES IN TONNES BY YEAR



TOP MARKET FOR MSC LABELLED TUNA PRODUCTS (TONNES)



GLOBAL MSC TUNA BENCHMARK



Volume (KG) of MSC labelled tuna consumed per capita in the country in 23/24. Includes year-end forecast data.