

KEY DATA FOR GLOBAL TUNA IN THE MSC PROGRAM

MSC TUNA SUPPLY, APRIL 2023

TOTAL MAJOR COMMERCIAL TUNA CATCH



4,958,528 TONNES (FAO 2020)

Around 64% of the global tuna catch is engaged in the MSC program (certified or in full assessment)

VOLUME OF TUNA IN THE MSC PROGRAM

METRIC TONNES

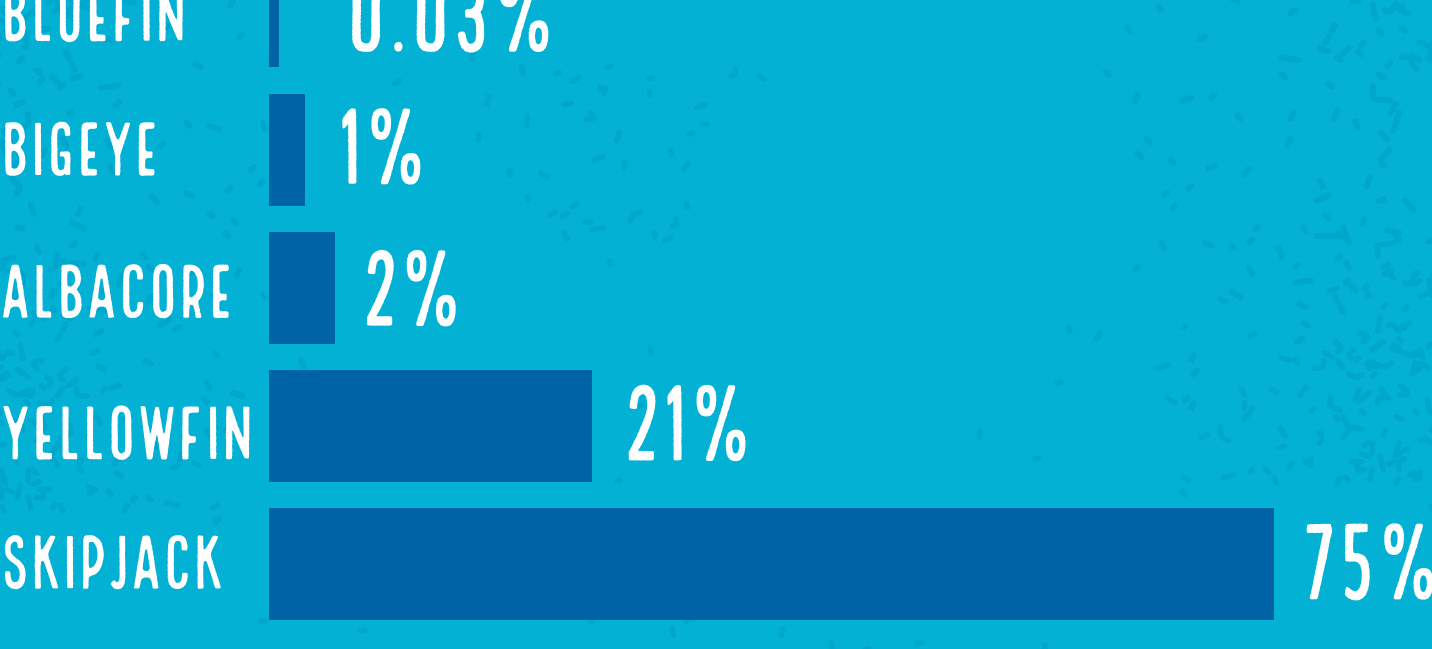
1,980,480 T

CERTIFIED

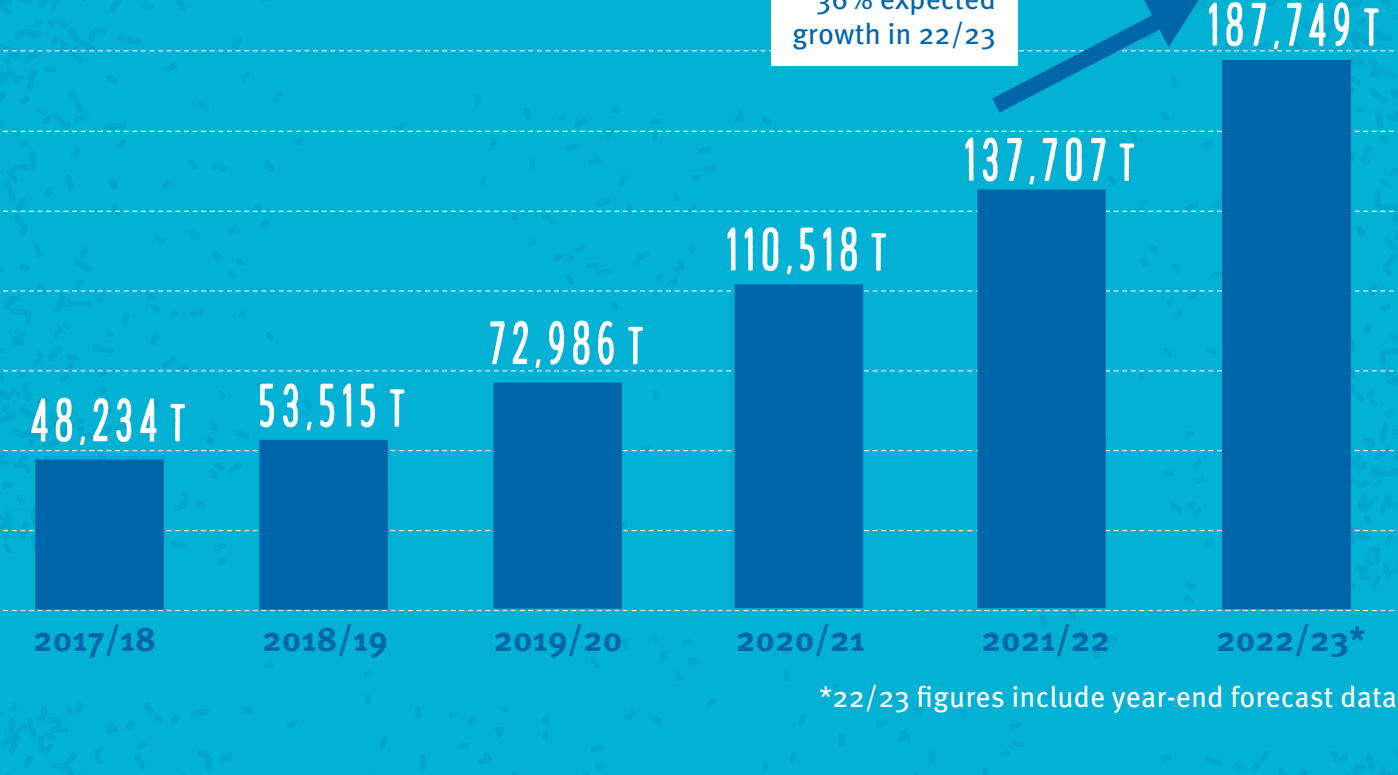
1,175,956 T

IN ASSESSMENT

MSC CERTIFIED TUNA BY SPECIES



MSC LABELLED PRODUCT VOLUMES IN TONNES BY YEAR



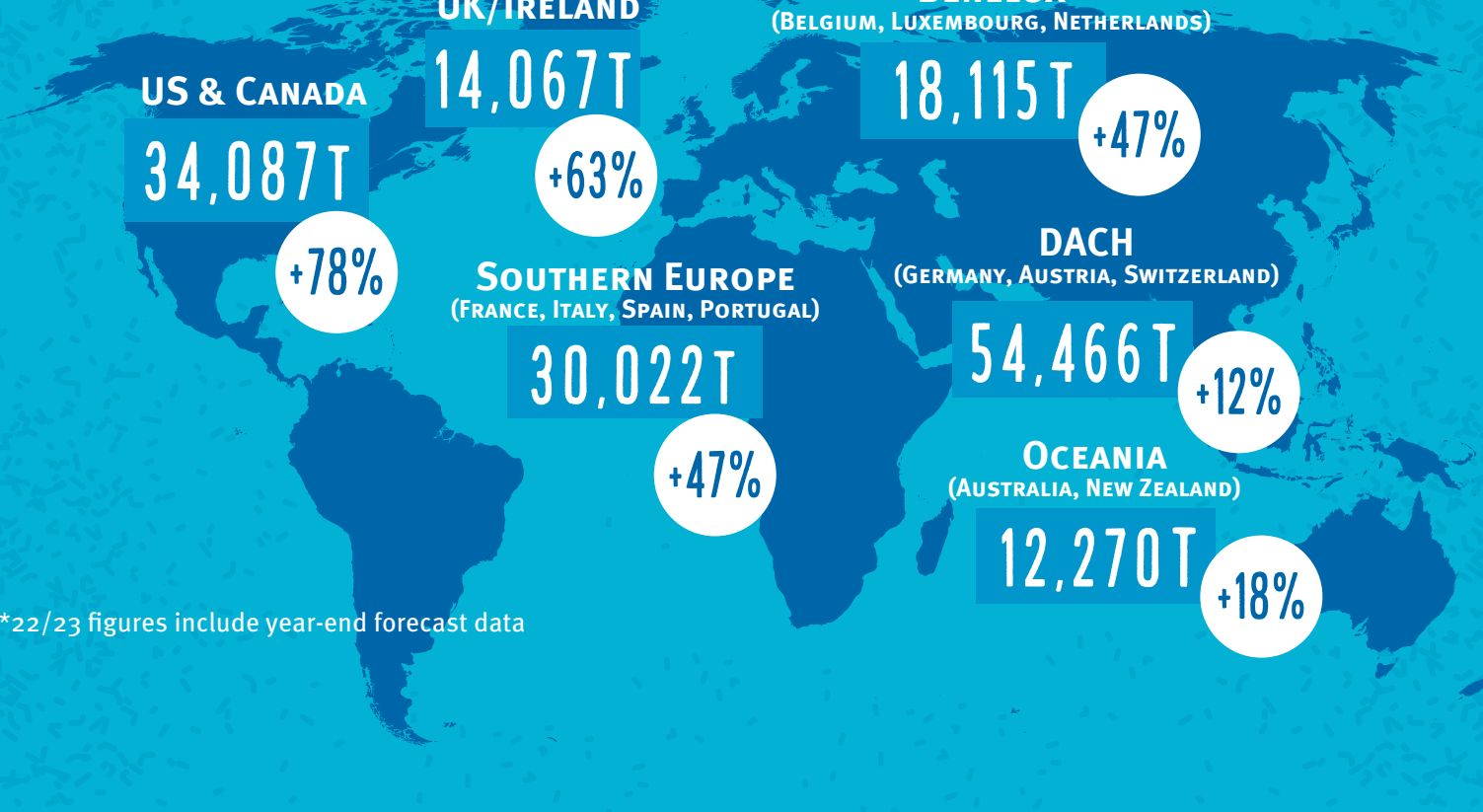
NUMBER OF BRANDS SELLING MSC LABELLED TUNA, BY SPECIES

In 2022/23...



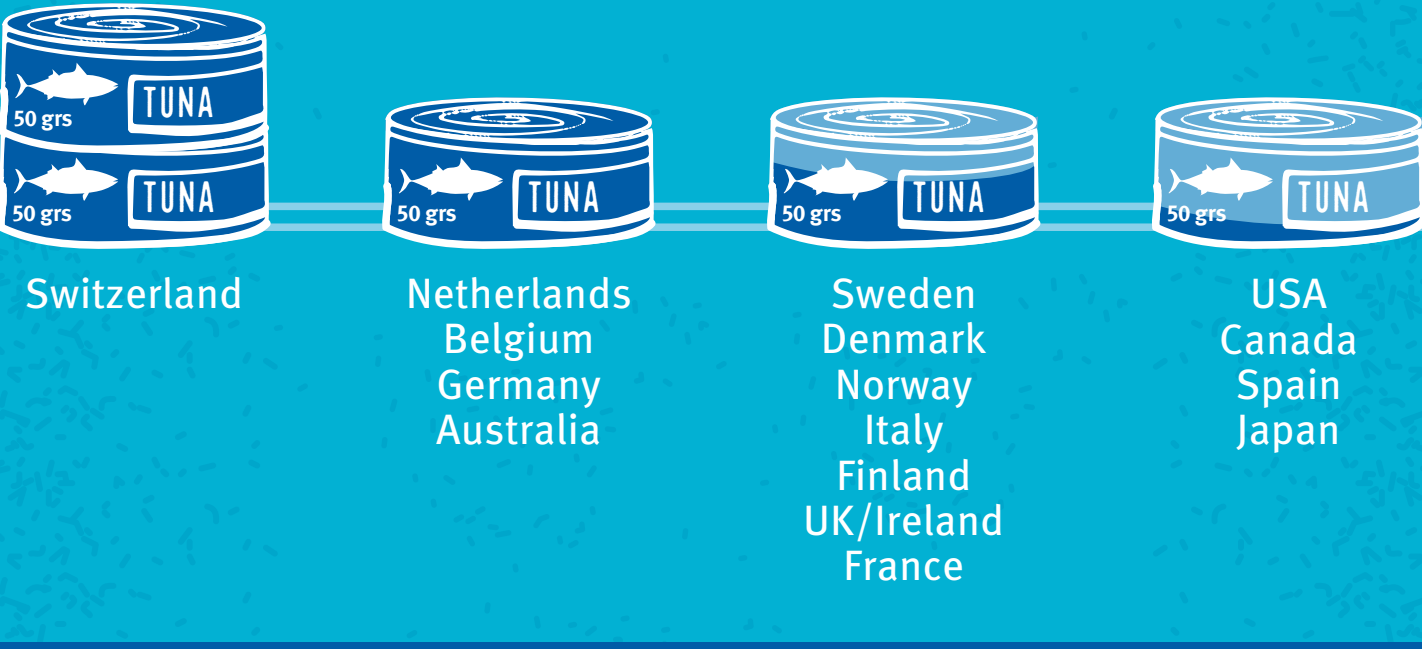
TOP MARKET FOR MSC LABELLED TUNA PRODUCTS (TONNES)

MSC LABELLED TUNA VOLUMES, AND YEARLY PERCENTAGE GROWTH



GLOBAL MSC TUNA BENCHMARK

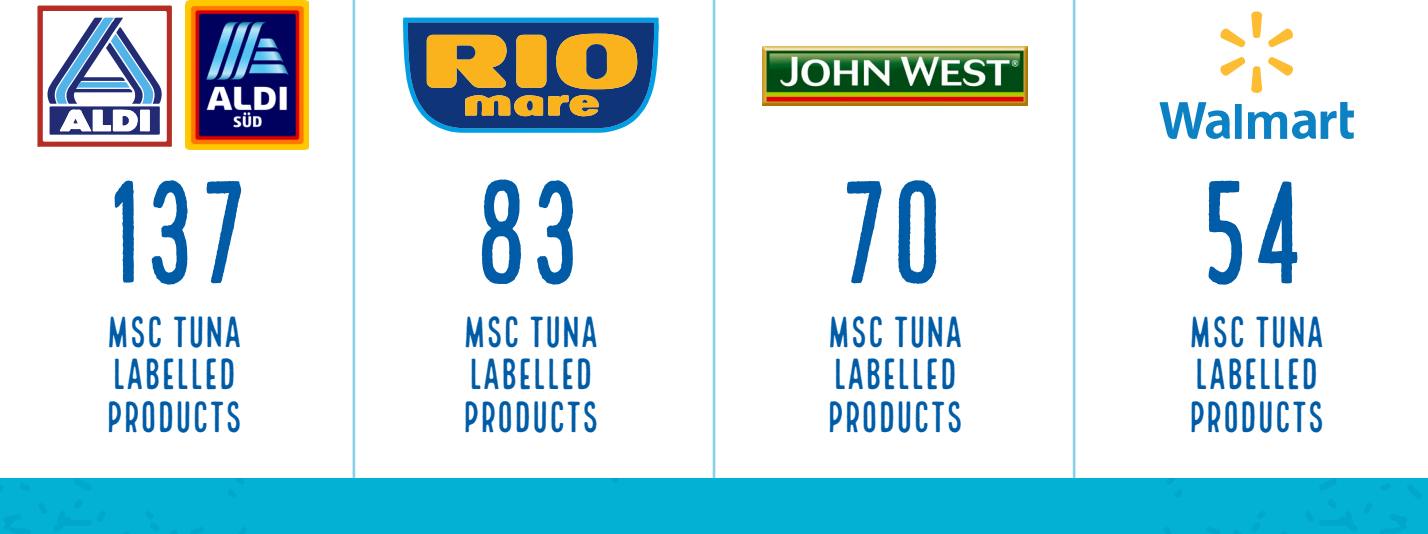
PER CAPITA CONSUMPTION OF MSC LABELLED TUNA IN 22/23.



Volume (kgs) of MSC labelled tuna consumed in the country in 22/23 vs population

BRANDS LEADING MSC TUNA BY REGION

COMPANIES LEADING THE VOLUME AND NUMBER OF MSC LABELLED TUNA PRODUCTS BY REGION IN 2022/23.



TOP MSC PROCESSORS BY REGION

COMPANIES LEADING THE PROCESSING OF MSC TUNA BY REGION IN 2022/23.

